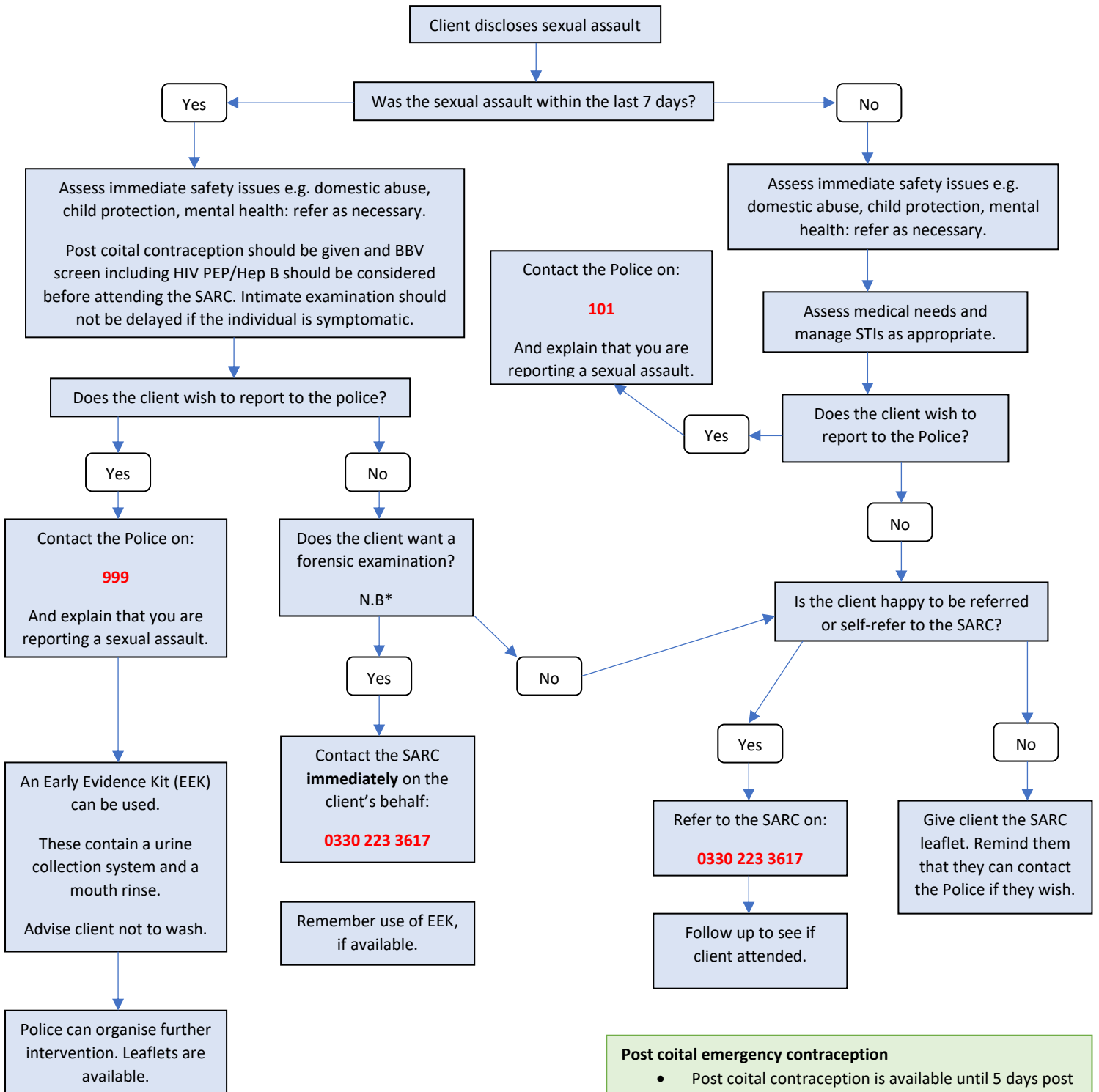


## Professional Referral Pathway for Sexual Assault into a SARC: Hazlehurst Centre, Dewsbury



### \*NB – Forensic Window

Beware that the collection of certain forensic samples will be determined by the nature of the assault. The 7 day window is a guideline.

Vaginal Penetration – 7 days

Anal Penetration – 72 hours

Oral Penetration – 48 hours

Digital Penetration – 48 hours

Injuries can be documented when present

Clothing, tampons, toothbrushes, etc. can all be saved to provide evidence.

**Therapeutic need ALWAYS comes before forensic samples. Contact the SARC if in doubt on 0330 223 3617 during office hours. For out of hours advice, contact Mountain Healthcare on 0330 223 0099.**

### Post coital emergency contraception

- Post coital contraception is available until 5 days post assault and consideration for an IUCD if required.
- The SARC offers post coital contraception however, is unable to offer IUCD therefore local pathways should

### Management of Sexual Health

HIV risk assessment should be conducted within 72 hours of assault and consideration given to HIV PEP. This can be undertaken by the SARC.

Further sexual health screening is undertaken at the GUM clinic including hepatitis B vaccination and ongoing monitoring. An appointment should be offered at 2 weeks post incident. The SARC can offer advice if required.